

ITRES iCON RGB Camera Controller

Frame Camera Command and Control Unit for Flight Data Capture / Preprocessing



iCON shown with cable strain relief assembly and vibration isolators (included)

COMPATIBLE WITH PhaseONE FRAME CAMERAS

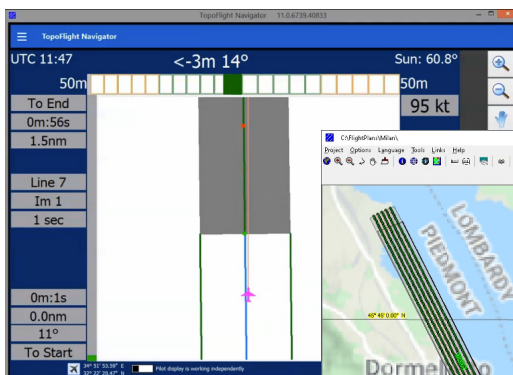
USES ITRES DEVELOPED IMAGE CAPTURE SW

NETWORK CONFIGURABLE AND READY FOR MULTIPLE SYSTEM INTEGRATION ON ITRES' iMMS SYSTEMS.

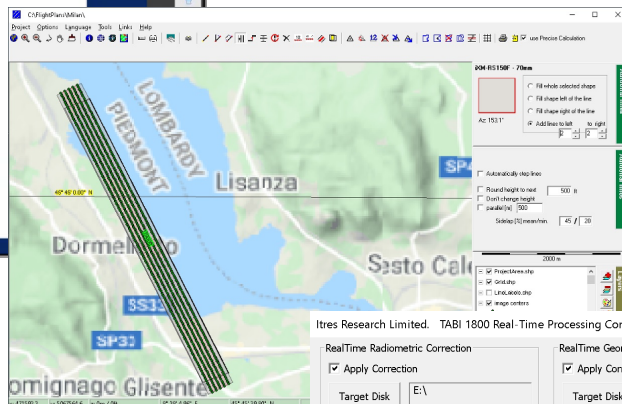
CAN SERVE AS FLIGHT MANAGEMENT SYSTEM (with optional iFMS SW) IN iMMS CONFIGURATION.

CAN SERVE AS IN-FLIGHT NRT PREPROCESSING / ANALYSIS SYSTEM WITH SW MODULES

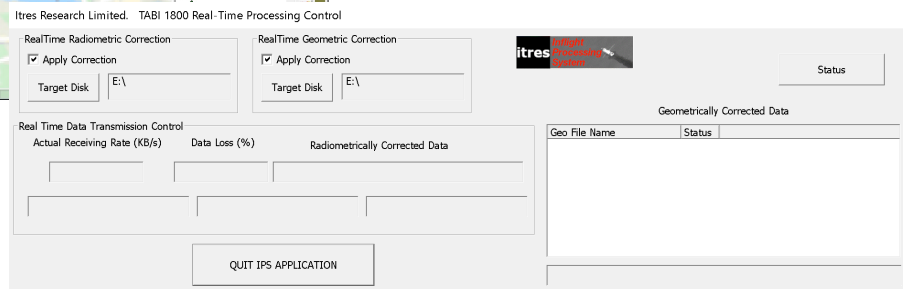
Example SW modules that can be installed on iCON system (purchased separately)



iFMS Navigator



iFMS Planner



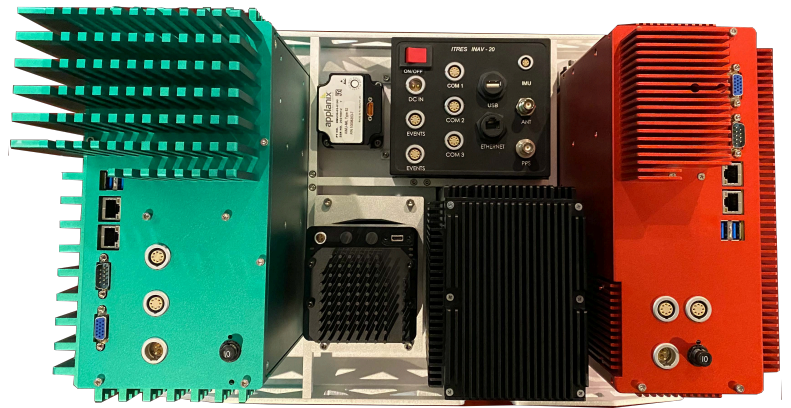
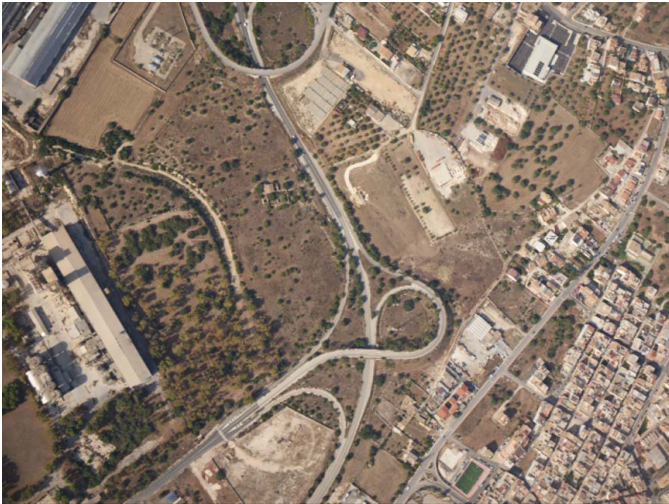
ITRES Inflight Processing System



ITRES iCON RGB Camera Controller

Selected Technical Specifications

- Removable 8 TB SSD
- 4 USB 3.0 ports, 1 USB C Port and 2 RJ45 Ethernet Ports
- 16 GB DD4 RAM
- Passed testing for various DO-160G Sections/Categories
- No export permit required



iMMS with integrated frame Camera, uCASI-1920 (VNIR), uSASI-640 (SWIR) and, uTABI-640 (MWIR) sensors

DIMENSIONS, WEIGHTS, AND POWER

ITEM	W / H / D (CM) / WT. (KG)
iCON Module	33.8 / 14.8 / 26.7 / 5.05 kg
Power Draw (max)	80W @ 28 VDC

ENVIRONMENTAL CONSTRAINTS

Operating Temperature	-20°C to +50°C
Storage Temperature	-30°C to +75°C
Max. Unpressurized Altitude	4500m ASL

